

\$135,000 - 2049 Summit Drive Unit# 422 C, Panorama

MLS® #10364634

\$135,000

3 Bedroom, 2.00 Bathroom, 1,168 sqft
Recreational on 1.00 Acres

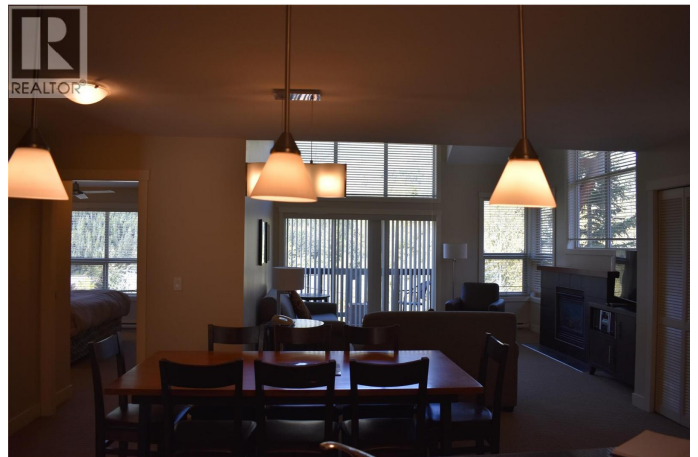
Lookout, Panorama, British Columbia

Looking for an unique vacation option, this 1/4 share unit may be just what you are looking for. Just a fraction of what a full ownership unit would cost and the availability to use the unit approximately one week each month. with everything on one floor makes family living and entertaining so easy. Located on the quiet side of the building with vast views to the north with the Paradise area as the backdrop. The close proximity to everything that Panorama has to offer as you are just steps away from village center, the main ski lifts, the Springs Pools complex, dining and shopping. Your monthly fee cover absolutely everything, interior and exterior maintenance, property taxes Village amenity fees and your insurance, the even pay to replace all furnishings and houseware as needed. Call your realtor today. (id:36535)

Built in 2006

Essential Information

Listing #	10364634
Price	\$135,000
Bedrooms	3
Bathrooms	2.00
Square Footage	1,168
Acres	1.00
Year Built	2006
Type	Recreational
Sub-Type	Strata



Community Information

Address	2049 Summit Drive Unit# 422 C
Subdivision	Lookout
City	Panorama
State	British Columbia
Zip Code	V0A1T0

Amenities

Parking Spaces	1
Parking	Parkade

Interior

Heating	Baseboard heaters
# of Stories	1

Additional Information

Zoning	Residential
--------	-------------

Listing Details

Listing Office	Courtesy Of David Jenkins Of MaxWell Rockies Realty
----------------	---

MLS®, REALTOR®, and the associated logos are trademarks of The Canadian Real Estate Association.