

\$319,900 - 717 12th Avenue Unit# 8, Invermere

MLS® #10361932

\$319,900

2 Bedroom, 1.00 Bathroom, 870 sqft

Single Family on 1.00 Acres

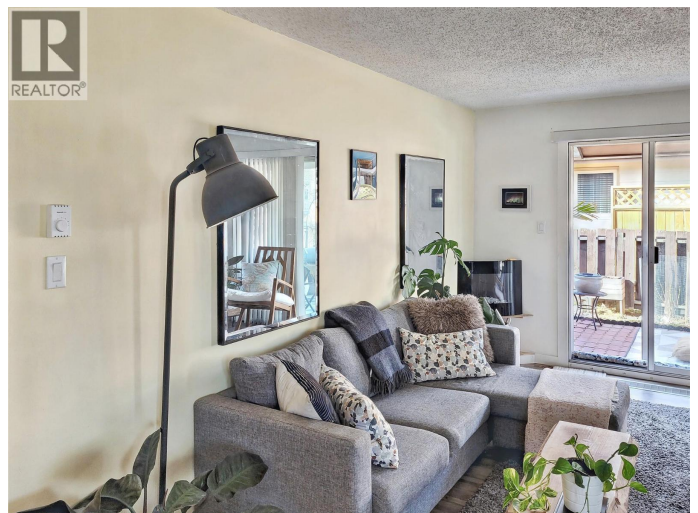
Invermere Park Condos, Invermere, British Columbia

Welcome to this charming 2-bedroom, 1-bath ranch style unit in a well-kept complex just minutes from downtown Invermere. Tucked in a quiet, landscaped setting, this home offers the perfect balance of comfort and convenience. Enjoy your private yard and exterior deck, ideal for relaxing after a day on the lake, golf course or ski hill. With parks, golf and Panorama Ski Resort nearby, adventure is never far from your doorstep. Inside you'll find a bright functional layout that's easy to maintain. This property is also a fantastic investment opportunity. With low strata fees of only \$230/month its one of the best values in the valley Don't miss your chance to own an affordable slice of the Columbia Valley lifestyle (id:36535)

Built in 1978

Essential Information

Listing #	10361932
Price	\$319,900
Bedrooms	2
Bathrooms	1.00
Square Footage	870
Acres	1.00
Year Built	1978
Type	Single Family
Sub-Type	Strata



Style	Ranch
-------	-------

Community Information

Address	717 12th Avenue Unit# 8
Subdivision	Invermere Park Condos
City	Invermere
State	British Columbia
Zip Code	V0A1K0

Amenities

Amenities	Golf Nearby, Park, Recreation, Schools, Shopping, Ski area
Parking Spaces	1
Parking	Stall
View	Mountain view, View (panoramic)

Interior

Heating	Electric Baseboard heaters
# of Stories	1

Exterior

Exterior	Wood siding
Exterior Features	Landscaped
Roof Material	Asphalt shingle
Roof Style	Unknown

Additional Information

Zoning	Unknown
--------	---------

Listing Details

Listing Office	Courtesy Of Robin Betker and Giovanna Paz Of Century 21 Purcell Realty Ltd
----------------	--

MLS®, REALTOR®, and the associated logos are trademarks of The Canadian Real Estate Association.