

\$529,000 - 4868 Riverview Drive Unit# 12, Edgewater

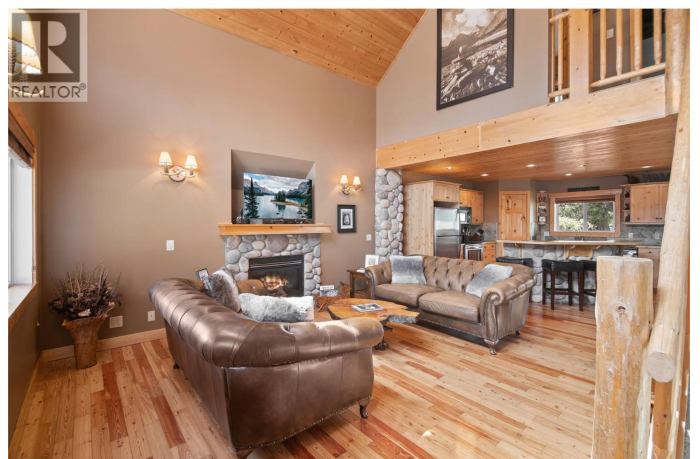
MLS® #10359347

\$529,000

3 Bedroom, 2.00 Bathroom, 1,555 sqft
Single Family on 0.08 Acres

Valley's Edge Resort, Edgewater, British Columbia

Experience the perfect blend of luxury and wilderness in this stunning log cabin retreat! Located in the desirable Valley's Edge™ Resort, this beautifully handcrafted log cabin offers 1,750 sq. ft. of finished living space over three levels, blending rustic charm with modern comfort. This stunning cabin features soaring 23-ft pine vaulted ceilings, hand-scraped log railings, and thoughtful details like custom wood blinds and slate flooring. The main level boasts a bright living room with stone propane fireplace, a chef's kitchen with an island and walk-in pantry, and a dining area that comfortably seats 10. Upstairs, you'll find two cozy bedrooms, a full bathroom, and a lofted reading nook. The lower level offers a private master bedroom with a steam shower ensuite, a spacious family room with a second fireplace, and a full laundry/utility room. Enjoy mountain views from the expansive wraparound deck, a stack-stone firepit, and matching 8x8 log-sided shed. Recent upgrades include a new hot water tank (2024) and a new metal roof replaced in 2025. With three-car gravel parking and low-maintenance landscaping, this property is turn-key and ready to enjoy. The resort community features a pool, community center, pickleball court and recreational amenities, making this not just a home—but a lifestyle choice. Whether you're planning summer getaways, winter ski trips, or everything in between, this is the perfect



year-round base. (id:36535)

Built in 2007

Essential Information

Listing #	10359347
Price	\$529,000
Bedrooms	3
Bathrooms	2.00
Square Footage	1,555
Acres	0.08
Year Built	2007
Type	Single Family
Sub-Type	Strata
Style	Cabin, Log house/cabin

Community Information

Address	4868 Riverview Drive Unit# 12
Subdivision	Valley's Edge Resort
City	Edgewater
State	British Columbia
Zip Code	V0A1E0

Amenities

Amenities	Golf Nearby, Park, Recreation, Clubhouse, Recreation Centre, RV Storage
Features	Treed, Balcony
Parking Spaces	3
Parking	Other, Stall
View	Mountain view, Valley view, View (panoramic)
Has Pool	Yes
Pool	Inground pool, Outdoor pool, Pool

Interior

Appliances	Range, Refrigerator, Dishwasher, Microwave, Oven, Washer & Dryer
Heating	Electric Forced air
Cooling	Central air conditioning
Fireplace	Yes
# of Fireplaces	2

Fireplace Fuel	Propane
Fireplace Type	Unknown
# of Stories	3

Exterior

Exterior	Metal, Stone, Wood
Exterior Features	Landscaped, Wooded area
Roof Material	Metal
Roof Style	Unknown

Additional Information

Zoning	Unknown
--------	---------

Listing Details

Listing Office	Courtesy Of Jessica Bertrand Of RE/MAX Invermere
----------------	--

MLS®, REALTOR®, and the associated logos are trademarks of The Canadian Real Estate Association.