

# \$250,000 - 4775 Wood Lane Unit# 26, Windermere

MLS® #10347988

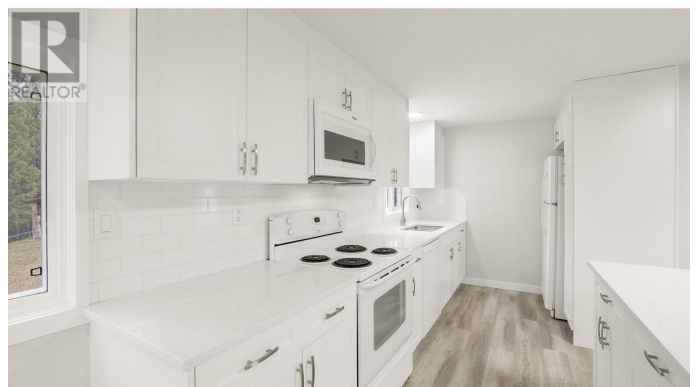
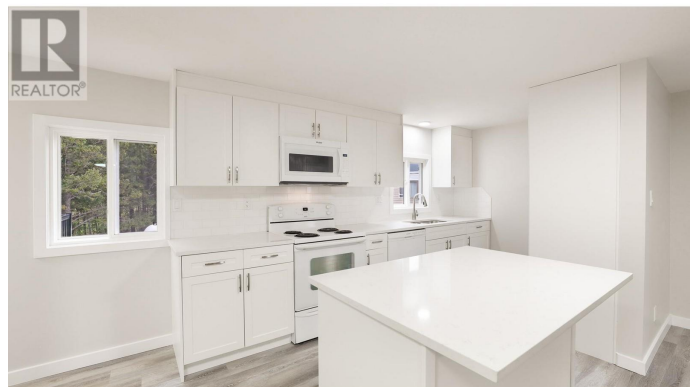
**\$250,000**

3 Bedroom, 2.00 Bathroom, 1,197 sqft

Single Family on 1.00 Acres

Windermere, Windermere, British Columbia

Step into charm and contemporary living with this stunningly refurbished manufactured home nestled in the heart of Windermere. Located close to both the elementary school and the Lake Windermere, offering convenience and comfort. With an interior that features new drywall finishes, quartz countertops, and the latest in vinyl plank flooring, the home exudes the freshness and sophistication of a brand-new show home. Offering a generous layout with three bedrooms and two full bathrooms, this dwelling also features a versatile bonus room or office space, catering to all your family or recreational needs. Heating is a breeze with a variety of options at your fingertips, including forced air propane, a heat pump, a cosy pellet stove, and additional electric baseboard heating for that extra touch of warmth. Consider the value proposition this home represents: at a price where the market typically offers condos enveloped in corridors and elevators, here lies the prospect of single-family style living without the premium cost. Move-in-ready and waiting for you, this home is an affordable opportunity. Take note of the reasonable pad rental of \$400 per month, covering sewer expenses, while water adds a mere \$33 monthly. It is important to be aware that park management maintains a policy of no rentals or pets. Capture this unique opportunity to revel in a living experience that melds affordability with the luxury of space and style—your slice of Windermere bliss awaits. (id:36535)



Built in 1974

## Essential Information

Listing #	10347988
Price	\$250,000
Bedrooms	3
Bathrooms	2.00
Square Footage	1,197
Acres	1.00
Year Built	1974
Type	Single Family
Sub-Type	Freehold

## Community Information

Address	4775 Wood Lane Unit# 26
Subdivision	Windermere
City	Windermere
State	British Columbia
Zip Code	V0B2L2

## Amenities

Amenities	Golf Nearby, Schools, Ski area
Features	Cul-de-sac, Central island
View	Mountain view, View (panoramic)

## Interior

Heating	Heat Pump, Other, See remarks
Fireplace	Yes
Fireplace Fuel	Pellet
Fireplace Type	Stove
# of Stories	1

## Exterior

Exterior Features	Landscaped
Roof Material	Asphalt shingle
Roof Style	Unknown

## Additional Information

Zoning	Unknown
--------	---------

**Listing Details**

Listing Office                      Courtesy Of Jenna Minnaar and Hannah de Soto Of RE/MAX Invermere

MLS®, REALTOR®, and the associated logos are trademarks of The Canadian Real Estate Association.