

# \$449,000 - 205 Third Avenue Unit# 2102, Invermere

MLS® #10346492

**\$449,000**

2 Bedroom, 2.00 Bathroom, 903 sqft

Single Family on 1.00 Acres

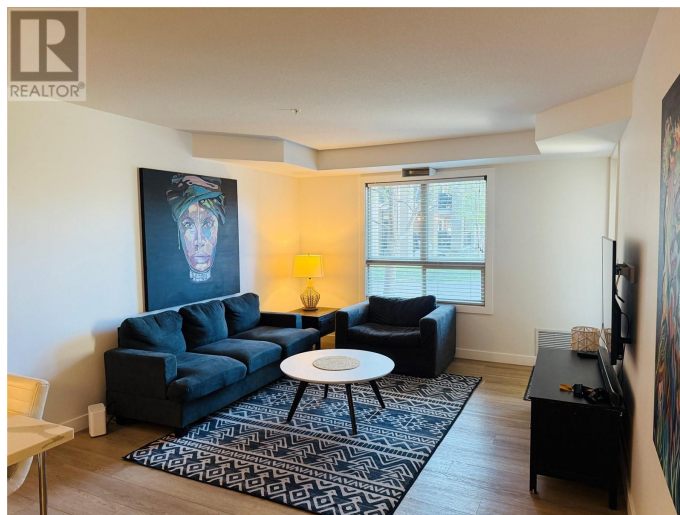
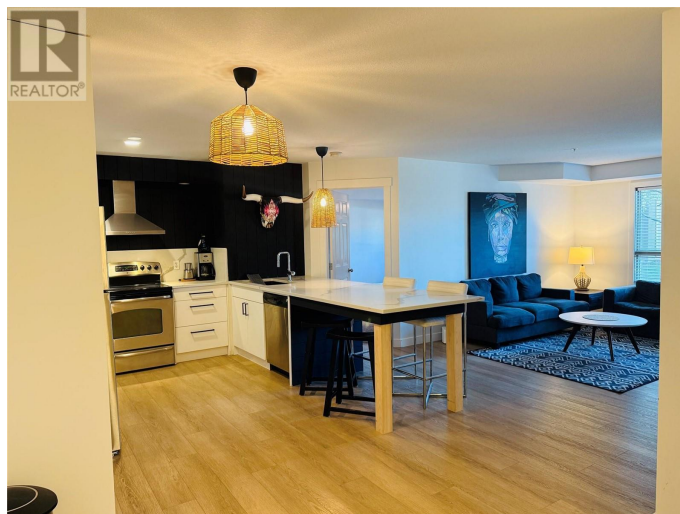
Lake Windermere Pointe of View, Invermere,  
British Columbia

Welcome to your fully renovated, move-in ready condo at Lake Windermere Pointe. This beautifully updated ground-floor unit offers convenient walk-up access—perfect for easy unloading, packing, or simply coming and going without the hassle of navigating through the building. Inside, you'll find a modern, open-concept layout featuring two spacious bedrooms, including a primary suite with its own private ensuite. The renovations throughout the unit offer a fresh, contemporary feel, making it ideal for full-time living or a weekend retreat. Enjoy all the amenities Lake Windermere Pointe has to offer, including a pool, hot tub, exercise room, office lounge, along with unbeatable access to the lake, downtown Invermere, and surrounding golf courses and outdoor adventures. This is easy mountain living at its best. (id:36535)

Built in 2008

## Essential Information

Listing #	10346492
Price	\$449,000
Bedrooms	2
Bathrooms	2.00
Square Footage	903
Acres	1.00
Year Built	2008
Type	Single Family



Sub-Type	Strata
Style	Bungalow

### Community Information

Address	205 Third Avenue Unit# 2102
Subdivision	Lake Windermere Pointe of View
City	Invermere
State	British Columbia
Zip Code	V0A1K0

### Amenities

Features	Balcony
Parking Spaces	1
Parking	Parkade, See Remarks, Stall
View	Mountain view
Has Pool	Yes
Pool	Inground pool

### Interior

Heating	Electric Baseboard heaters, Heat Pump
Cooling	Heat Pump
# of Stories	1

### Exterior

Exterior	Cedar Siding, Stucco
Roof Material	Asphalt shingle
Roof Style	Unknown

### Additional Information

Zoning	Unknown
--------	---------

### Listing Details

Listing Office	Courtesy Of DK Rice and RT Rice Of Royal LePage Rockies West
----------------	--

MLS®, REALTOR®, and the associated logos are trademarks of The Canadian Real Estate Association.