

# \$315,000 - 2090 Summit Drive Unit# 203, Panorama

MLS® #10335843

**\$315,000**

1 Bedroom, 1.00 Bathroom, 548 sqft

Single Family on 1.00 Acres

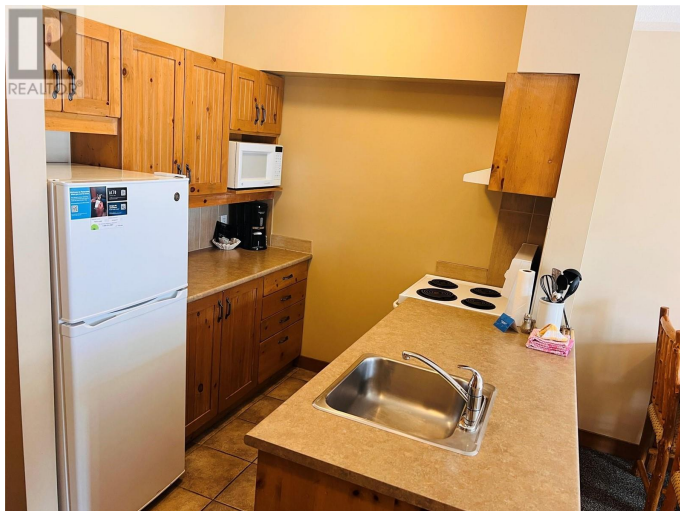
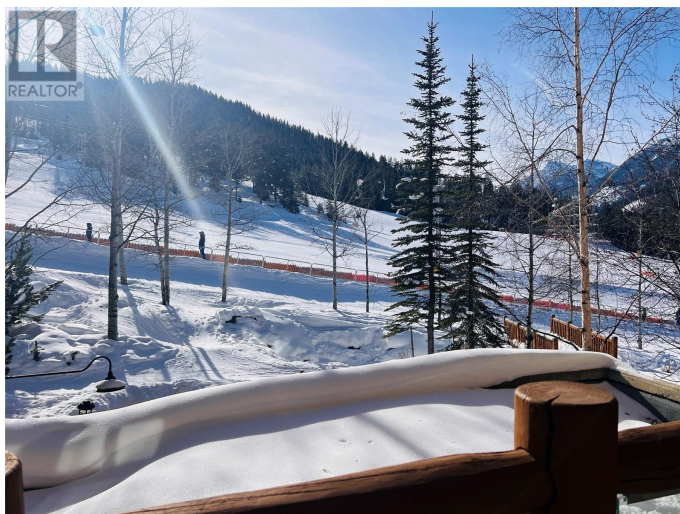
Taynton Lodge, Panorama, British Columbia

Experience the ultimate ski-in/ski-out lifestyle with this west-facing one-bedroom condo overlooking the breathtaking Panorama ski hill. Step outside and ski directly from your condo down to the first chairlift, making early morning runs effortless. Located in the heart of Panorama Mountain Resort, this condo offers unparalleled access to all resort amenities, including hot pools, restaurants, and more. The complex itself features its own private gym, adding even more convenience to your mountain getaway. Whether you're looking for a winter escape or a year-round retreat, this condo delivers incredible views, unbeatable location, and true mountain living. Don't miss out on this opportunity to own a piece of Panorama's premier slope side experience! (id:36535)

Built in 2001

## Essential Information

Listing #	10335843
Price	\$315,000
Bedrooms	1
Bathrooms	1.00
Square Footage	548
Acres	1.00
Year Built	2001
Type	Single Family
Sub-Type	Strata



Style	Ranch
-------	-------

### **Community Information**

Address	2090 Summit Drive Unit# 203
Subdivision	Taynton Lodge
City	Panorama
State	British Columbia
Zip Code	V0A1T0

### **Amenities**

Amenities	Cable TV, Laundry Facility, Whirlpool
Parking Spaces	2
Parking	Parkade, Underground
Has Pool	Yes
Pool	Outdoor pool

### **Interior**

Heating	Baseboard heaters
# of Stories	1

### **Additional Information**

Zoning	Unknown
--------	---------

### **Listing Details**

Listing Office	Courtesy Of DK Rice and RT Rice Of Royal LePage Rockies West
----------------	--

MLS®, REALTOR®, and the associated logos are trademarks of The Canadian Real Estate Association.