

# \$127,000 - 2049 Summit Drive Unit# 311d, Panorama

MLS® #10330476

**\$127,000**

3 Bedroom, 3.00 Bathroom, 1,208 sqft  
Single Family on 1.00 Acres

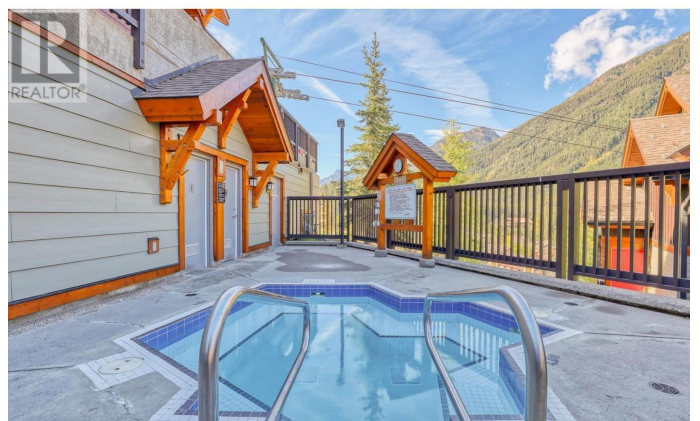
Lookout, Panorama, British Columbia

Welcome to The Lookout at Panorama Mountain Village! You can enjoy 12-13 weeks per year of use (1/4 share) of this 3 bedroom and 2.5 bath townhouse. This unit offers two levels of living with beautiful views of Mount Nelson. With over 1200 square feet of living space, it offers a spacious retreat after a long day of skiing. Featuring a large living area with fireplace, large dining room and spacious kitchen area with plenty of counter space and storage. Tucked off the kitchen is the laundry and powder room for convenience. The 3 bedrooms and additional two bathrooms are located on the upper floor. Take advantage of the complex hot tub, underground parking, bbq area and storage lockers for owners use or head to the upper village to enjoy all the Panorama Resort amenities! PHOTOS ARE FROM WHEN BUYER'S PURCHASED. UPDATED PHOTOS COMING SOON!  
(id:36535)

Built in 2006

## Essential Information

Listing #	10330476
Price	\$127,000
Bedrooms	3
Bathrooms	3.00
Half Baths	1
Square Footage	1,208
Acres	1.00



Year Built	2006
Type	Single Family
Sub-Type	Strata

### **Community Information**

Address	2049 Summit Drive Unit# 311d
Subdivision	Lookout
City	Panorama
State	British Columbia
Zip Code	V0A1T0

### **Amenities**

Parking	Heated Garage, Underground
Has Pool	Yes
Pool	Inground pool, Outdoor pool, Pool

### **Interior**

Heating	No heat
Fireplace	Yes
Fireplace Fuel	Electric
Fireplace Type	Unknown
# of Stories	2

### **Exterior**

Exterior	Cedar Siding, Stone, Wood siding
Roof Material	Asphalt shingle
Roof Style	Unknown

### **Additional Information**

Zoning	Unknown
--------	---------

### **Listing Details**

Listing Office	Courtesy Of Jenna Minnaar Of RE/MAX Invermere
----------------	---

MLS®, REALTOR®, and the associated logos are trademarks of The Canadian Real Estate Association.